



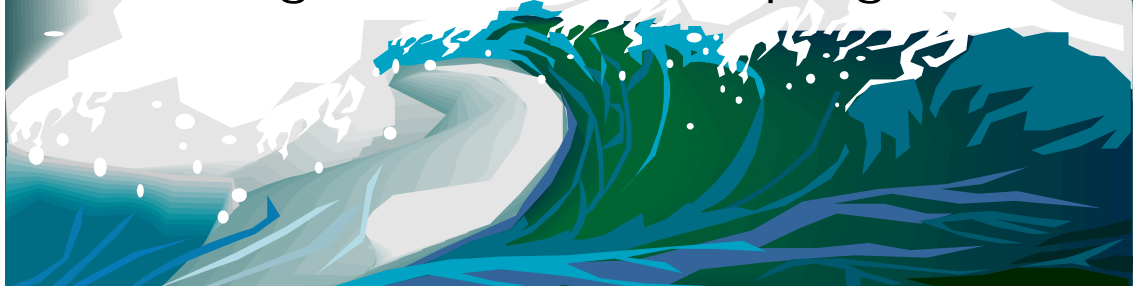
Sponsored by the
Envision Central Texas
Social Equity Committee
and
Economic Development
Coordination Committee
and



IN COOPERATION WITH

- Asian American Cultural Center
- Austin Area Research Organization
- Austin Area Urban League
- Austin Community College District
- Bastrop Chamber of Commerce
- Capital Area Council of Governments
- Capital Area Transportation Coalition
- Capital City African-American Chamber of Commerce
- City of Cedar Park
- City of Elgin
- Community Action Network
- Community Action Inc.
- El Buen Samaritano
- Friendship Alliance
- Georgetown Chamber of Commerce
- Greater Austin Chamber of Commerce
- Greater Austin-San Antonio Corridor Council
- Hill Country Alliance
- Hill Country Conservancy
- Hutto Economic Development Corporation
- Hutto Chamber of Commerce
- Just Transportation Alliance
- Literacy Coalition of Central Texas
- MoNAC
- PeopleFund
- Pines and Prairies Land Trust
- Rural Capital Area Workforce Development Board
- San Marcos Area Chamber of Commerce
- Skillpoint Alliance
- Taylor Economic Development Corp.
- United Way Capital Area

Changing Demographics in Central Texas: Riding the Wave or Wiping Out



Friday, October 6 • 8:30 a.m. – 11:30 a.m.
Woodward Hotel and Conference Center • 3401 S. IH 35, Austin

The Central Texas Region is growing and changing. If forecasts prove true, in 40 years, our region's population will grow to more than 2 million and be older, less educated, less affluent and have a dramatically different ethnic makeup.

Are there steps that we can take today to "ride the wave of change" rather than letting it overwhelm us?

At Envision Central Texas' three-hour seminar we will:

- **Examine the implications of forecasted trends,**
- **Encourage thoughtful discussion of how these trends may impact our community's fabric, and**
- **Collaborate to develop actions to positively address those impacts.**

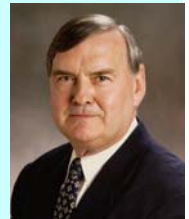
Dr. Steve Murdock's presentation will detail demographic forecasts for our region and state which will be followed by **four breakout sessions** that will enable participants to engage in more in-depth discussions about concerns and possible actions. Two regional "thought leaders" will guide each breakout session. The sessions and leaders are:

Breakout Sessions:

- **SH 130: Unifier or Divider?**
Alice Glasco, Alice Glasco Consulting
Polo Enriquez, Hutto Economic Development Corp.
- **Future Economic Growth: Are We Educating Our Workforce?**
Barbara Mink, Austin Community College Board of Trustees
Jeffrey Richard, Austin Area Urban League
- **Intra-regional Mobility: Why Do We Go Where We Go?**
Bill Hamilton, Bill Hamilton Associates
Michael Aulick, Capital Area Metropolitan Planning Organization
- **The Changing Social Fabric: How Do We Respond?**
Corina Jaimes, Community Action, Inc.
David Balch, United Way Capital Area

Keynote Speaker:
Steve H. Murdock

Dr. Steve H. Murdock is the State Demographer of Texas and the director of the Institute for Demographic and Socioeconomic Research and the Texas State Data Center at The University of Texas at San Antonio. He holds a Ph.D. in demography and sociology from the University of Kentucky and is the author of 12 books and more than 150 articles and technical reports on the implications of current and future demographic and socio-economic change. Among his publications is *The New Texas Challenge: Population Change and the Future of Texas*.



Reservations

Individual Tickets are \$25;
Sponsor Tables of 10 are \$350.
(Sponsors receive priority seating,
a table sign and program listing)

Continental breakfast is included.

To register online visit the
Event Calendar at
www.envisioncentraltexas.org
or call Diane Miller at 512.916.6037
Seating is limited. RSVP by 9/25/06
Cancellations accepted up to 72 hours
before event. No shows will be billed.